

MH 19

Promontory Rd

SV 448

P1

5933 Vedder Rd

SB2

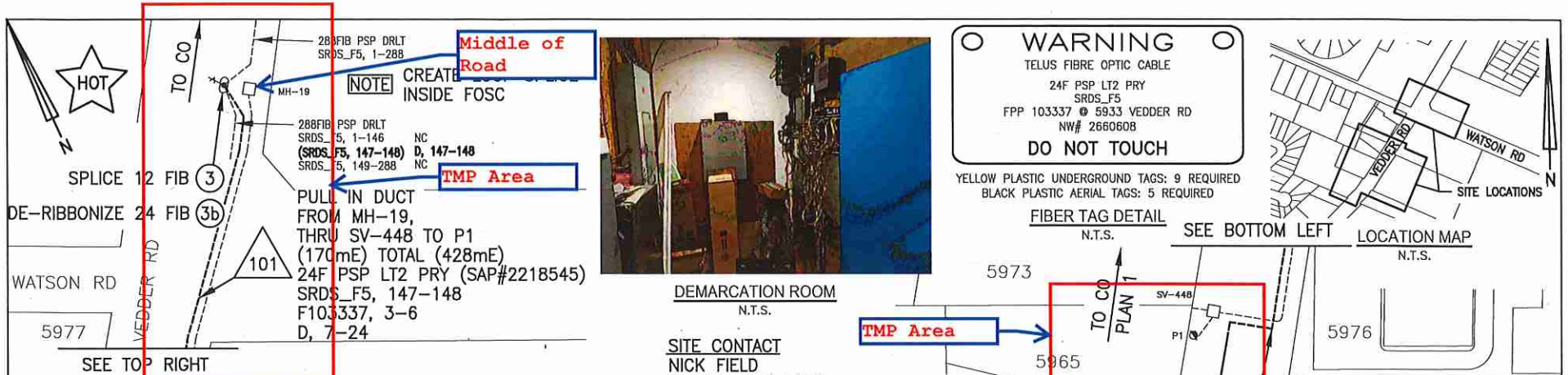
SB1

P5

© 2017 Europa Technologies
© 2017 Google

Goog

Imagery Date: 8/17/2016 49°06'44.00" N 121°57'36.04" W elev 28 m



WARNING
 TELUS FIBRE OPTIC CABLE
 24F PSP LT2 PRY
 SRDS_F5
 FPP 103337 @ 5933 VEDDER RD
 NW# 2660608
DO NOT TOUCH

YELLOW PLASTIC UNDERGROUND TAGS: 9 REQUIRED
 BLACK PLASTIC AERIAL TAGS: 5 REQUIRED

FIBER TAG DETAIL
 N.T.S.

SEE BOTTOM LEFT

LOCATION MAP
 N.T.S.



DEMARICATION ROOM
 N.T.S.

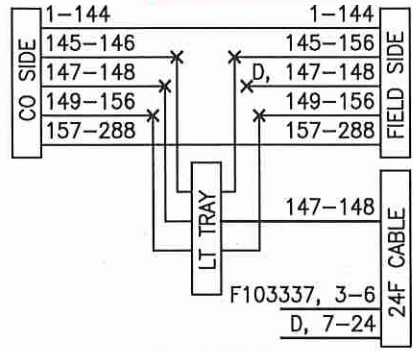
SITE CONTACT
 NICK FIELD
 O: 604-825-3678

PULL IN DUCT
 FROM P5 THRU SB-1,
 SB-2 TO MER @
 5933 VEDDER RD
 (114mE) TOTAL (428mE)
 24F PSP LT2 PRY (SAP#2218545)
 SRDS_F5, 147-148
 F103337, 3-6
 D, 7-24

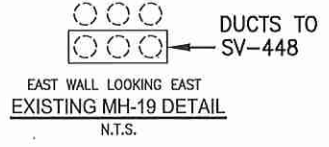
PULL IN DUCT
 FROM MH-19,
 THRU SV-448 TO P1
 (170mE) TOTAL (428mE)
 24F PSP LT2 PRY (SAP#2218545)
 SRDS_F5, 147-148
 F103337, 3-6
 D, 7-24 5954

SPIN TO LOWER STRAND
 FROM P1 TO P5
 (144mE) TOTAL (428mE)
 24F PSP LT2 PRY (SAP#2218545)
 SRDS_F5, 147-148
 F103337, 3-6
 D, 7-24

CONSTRUCTION NOTE:
 - ONLY RELEVANT CABLES AND
 STRUCTURES SHOWN FOR NW#2660608
 - BONDING AND GROUNDING AS REQUIRED



SPLICE 3 DETAIL

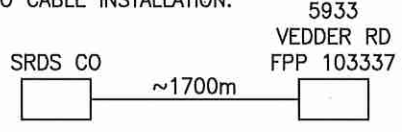


*** FLAGGING REQ'D FOR PLACING & MH SPlicing ***

- 556 ACCEPTANCE BI-DIRECTIONAL OTDR (2FIB)
- 557 ACCEPTANCE BI-DIRECTIONAL PWRMTR (2FIB)
- 558 ACCEPTANCE UNI-DIRECTIONAL OTDR (4FIB)
- 559 ACCEPTANCE UNI-DIRECTIONAL VLF RUBY RED (4FIB)

NOTE:

SB-1 REQUIRES CLEANING PRIOR
 TO CABLE INSTALLATION.



FOX ORDER: 2856560

400D5 SPLICE TRAYS (SAP# 1776164)	1
BLACK AERIAL FIBER TAG (SAP# 5120507)	5
YELLOW UNDERGROUND FIBER TAG (SAP# 5120462)	9
24F FIBER PATCH PANEL (SAP# 1064362)	2
5m SM SC/UPC PIGTAILS (SAP# 1076506)	6
24F FPP BULKHEAD PLATE (SAP# 1078428)	1
6F ADAPTER STRIP SC (SAP# 1078431)	1
12F SPLICE TRAY (SAP# 1025353)	1
12F SPLICE TRAY COVER (SAP# 1022006)	1

CONSTRUCTION		PERMIT		DESIGN: JOHN HAMMER		DR: JOHN HAMMER		THE WORKS PROPOSED ON THIS DRAWING SHALL AT ALL TIMES REMAIN THE PROPERTY OF TELUS	
REV.	DESCRIPTION:	SUBMITTED DATE:	PH: 604-720-3012	SCALE: N.T.S.	PROPOSED CONSTRUCTION TO 5933 VEDDER RD CHILLIWACK, BC				
REV.	DESCRIPTION:	RE-SUB DATE:	EM: jhammer@encepta.net	DATE: AUG 3, 2017					C.O. CODE: 2660608C SRDS SHEET 1 OF 1
REV.	DESCRIPTION:	RE-SUB DATE:	ASSOCIATED DRAWINGS		SYSTEM NAME: 2660608C1-1				
REV.	DESCRIPTION:	APPROVED:	TELUS: 2231258C, 2238870C, CP-2-26751,	TELUS Encepta					
REV.	DESCRIPTION:	DATE:	CP-1-28889A, EP-D-1536					A3	
REV.	DESCRIPTION:	AS CONSTRUCTED DATE:	REF: SRDS						
REV.	DESCRIPTION:	CONTRACTOR:							

TABLE A – TAPER LENGTHS									
Taper Types (m)	Regulatory Speed Limit before Work Begins (km/h)								
	≤ 50	60	70	80	90	100	110	120	
Merge Taper Length	1/4	35	55	160	190	210	230	250	280
Lane Shift Taper Length	1/4	30	50	80	100	110	120	130	140
Downstream Taper Length	1/4	30	30	30	30	30	30	30	30
TCP, Signal, and Shoulder Taper Length (min. 5 devices)	1/4	5	8	15	15	15	15	15	15
Minimum Tangent Length between Tapers	1/4	30	60	160	190	210	230	250	280
Run-in Length on Centreline	1/4	40	50	60	60	70	80	90	100

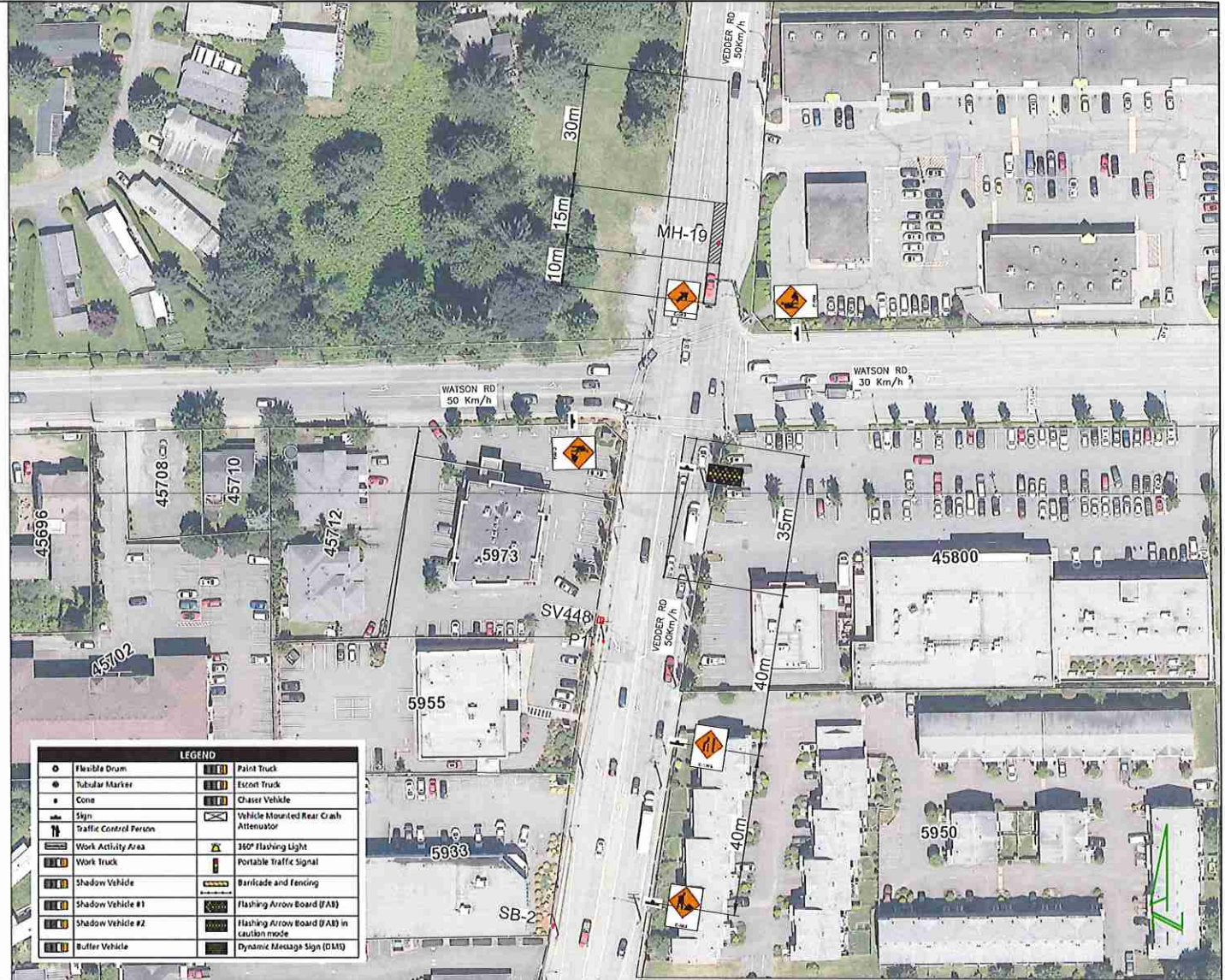
TABLE B – DEVICE SPACING LENGTHS									
Device Spacing (m)	Regulatory Speed Limit before Work Begins (km/h)								
	≤ 50	60	70	80	90	100	110	120	
Construction Sign Spacing	A	40	60	80	100	150	150	200	200
Buffer Space	B	30	40	60	80	110	140	170	200
Channelizing Device Spacing for Tapers	C	10	10	15	15	15	15	15	15
Channelizing Device Spacing on Curves and Tangents	D	10	10	30	30	40	40	40	50

NOTES:

1. THE WORK REQUIRING THE TRAFFIC CONTROL MEASURE INVOLVES THE PLACING AND SPLICING OF FIBER OPTIC CABLE AT MH-19 LOCATED ON NORTHBOUND VEDDER RD (APPROX. 36m FROM WATSON RD.) IN CHILLIWACK. THE DURATION OF USE OF THIS MEASURE WILL BE UNTIL THE WORK IS COMPLETED.
2. LANE CLOSURES ARE AS NOTED IN THIS LAYOUT.
3. TIMING OF THE WORKS WILL BE FROM 9:00AM TO 3:00 PM.
4. LOCATION OF THE WORK ZONE IS AS INDICATED ON THIS PLAN FOR CONSTRUCTION.
5. THE MEASURES SHOWN IN THIS TRAFFIC MANAGEMENT PLAN IS IN ACCORDANCE TO THE "BC TRAFFIC MANAGEMENT MANUAL FOR WORK ON ROADWAYS (2015 INTERIM)". CHANGES TO THIS LAYOUT MAY BE MADE BY THE TRAFFIC CONTROL PERSON IN CHARGE TO REFLECT FIELD CONDITIONS.
6. PRIORITY ACCESS WILL BE GIVEN TO EMERGENCY VEHICLES.
7. ALL DIMENSIONS ARE IN METRES.

CONTACT INFORMATION:

ALEC LUNDE:
C: 778-837-4642



LEGEND	
○ Flexible Drum	Paint Truck
● Tubular Marker	Escort Truck
▲ Cone	Chaser Vehicle
⚠ Sign	Vehicle Mounted Rear Crash Attenuator
👤 Traffic Control Person	360° Flashing Light
🚚 Work Activity Area	Portable Traffic Signal
🚚 Work Truck	Barriade and fencing
🚚 Shadow Vehicle	Flashing Arrow Board (FAB)
🚚 Shadow Vehicle #1	Flashing Arrow Board (FAB) in caution mode
🚚 Shadow Vehicle #2	Dynamic Message Sign (DMS)
🚚 Buffer Vehicle	



BC ONE CALL

CALL BEFORE YOU DIG
1 800-474-6888
VANCOUVER AREA
604-257-1940



CONSTRUCTION	PERMIT	DESIGN: DM	DR: DM	THE MATERIALS PROPOSED ON THIS DRAWING SHALL BE AT ALL TIMES REMAIN THE PROPERTY OF TELUS
REV. DESCRIPTION:	SUBMITTED DATE:	DATE: 2014	SCALE: NTS	PROPOSED TRAFFIC CONTROL LAYOUT TO ACCOMMODATE TELECOM CABLE PLACING & SPLICING
REV. DESCRIPTION:	RE SUB DATE:	DATE: 05/20/14	DATE: 05/20/14	
REV. DESCRIPTION:	APPROVED:	ASSOCIATED DRAWINGS:		DW: 1/2 OF VEDDER RD (APPROX. 36m NORTH FROM WATSON RD.) IN CHILLIWACK.
REV. DESCRIPTION:	DATE:			
REV. DESCRIPTION:	AS CONSTRUCTED DATE:			SYSTEM NAME: 2266008
REV. DESCRIPTION:	CONTRACTOR:			SHEET 1

TABLE A - TAPER LENGTHS							
Taper Types (m)	Regulatory Speed Limit before Work Begins (km/h)						
	< 50	60	70	80	90	100	110 120
Merge Taper Length	35	55	160	190	210	230	250 280
Lane Shift Taper Length	30	50	80	100	110	120	130 140
Downstream Taper Length	30	30	30	30	30	30	30
TCP, Signal, and Shoulder Taper Length (min. 5 devices)	5	8	15	15	15	15	15
Minimum Tangent Length between Tapers	30	60	160	190	210	230	250 280
Run-in Length on Centreline	40	50	60	60	70	80	90 150

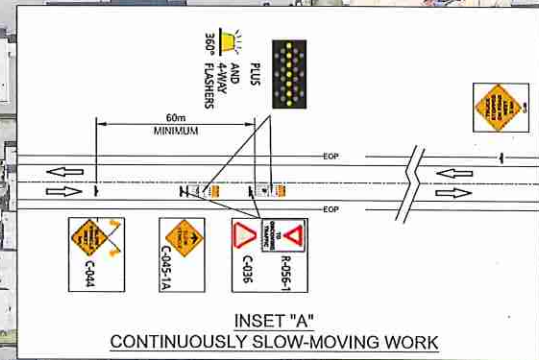
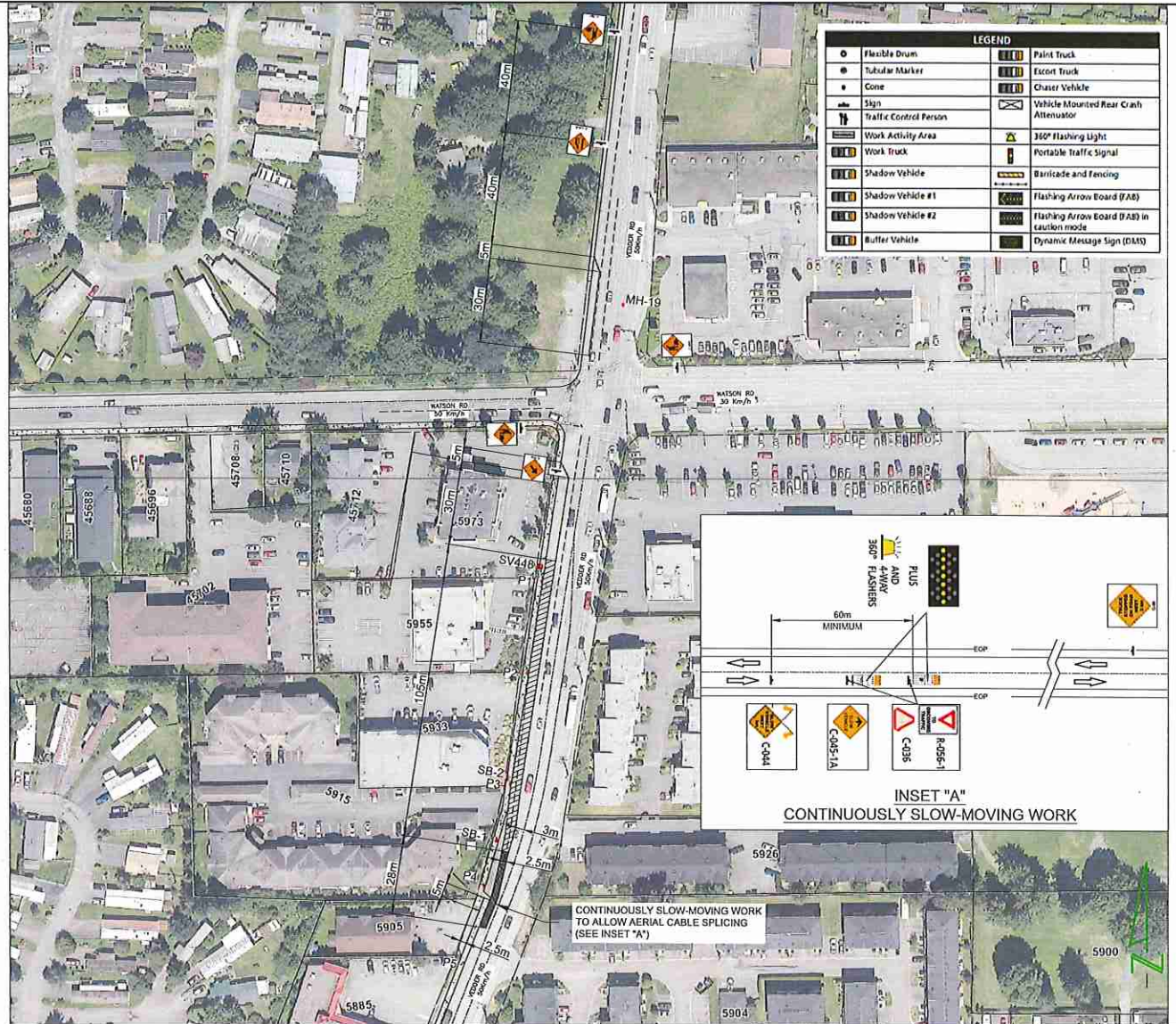
TABLE B - DEVICE SPACING LENGTHS							
Device Spacing (m)	Regulatory Speed Limit before Work Begins (km/h)						
	< 50	60	70	80	90	100	110 120
Construction Sign Spacing	A	40	60	80	100	150	200 200
Buffer Space	B	30	40	60	80	110	140 170 200
Channelling Device Spacing for Tapers	C	10	10	15	15	15	15 15 15
Channelling Device Spacing on Curves and Tangents	D	10	10	30	30	40	40 40 50

NOTES:

1. THE WORK REQUIRING THE TRAFFIC CONTROL MEASURE INVOLVES THE PLACING AND SPLICING OF FIBER OPTIC CABLE FROM SV448 LOCATED ON THE SOUTHBOUND OF VEDDER RD (APPROX. 60m FROM WATSON RD.) TO SB-2 LOCATED ON THE WEST SIDE OF VEDDER RD (APPROX. 115m FROM WATSON RD.) THRU POLE P1, P2, P3, P4 AND SB-1 IN CHILLIWACK. THE DURATION OF USE OF THIS MEASURE WILL BE UNTIL THE WORK IS COMPLETED.
2. LANE CLOSURES ARE AS NOTED IN THIS LAYOUT.
3. TIMING OF THE WORKS WILL BE FROM 9:00AM TO 3:00 PM.
4. LOCATION OF THE WORK ZONE IS AS INDICATED ON THIS PLAN FOR CONSTRUCTION.
5. THE MEASURES SHOWN IN THIS TRAFFIC MANAGEMENT PLAN IS IN ACCORDANCE TO THE "BC TRAFFIC MANAGEMENT MANUAL FOR WORK ON ROADWAYS (2015 INTERIM)". CHANGES TO THIS LAYOUT MAY BE MADE BY THE TRAFFIC CONTROL PERSON IN CHARGE TO REFLECT FIELD CONDITIONS.
6. PRIORITY ACCESS WILL BE GIVEN TO EMERGENCY VEHICLES.
7. ALL DIMENSIONS ARE IN METRES.

CONTACT INFORMATION:

ALEC LUNDE:
C: 778-837-4642



BC ONE CALL

CALL BEFORE YOU DIG
1 800-474-6886
VANCOUVER AREA
604-257-1940



CONSTRUCTION	PERMIT	DESIGN DM	DIR. CM
REV. DESCRIPTION	SUBMITTED DATE:	024-229-1872	SCALE: 1/16"
REV. DESCRIPTION	RE-SUB DATE:		DATE: 02/17/17
REV. DESCRIPTION	APPROVED:		ASSOCIATED DRAWINGS
REV. DESCRIPTION	DATE:		1.
REV. DESCRIPTION	AS CONSTRUCTED DATE:		2.
REV. DESCRIPTION	CONTRACTOR:		3.

PROPOSED TRAFFIC CONTROL LAYOUT TO ACCOMMODATE TELECOM CABLE PLACING & SPLICING

ON: S/B OF VEDDER RD & SOUTH OF WATSON RD IN CHILLIWACK

SYSTEM NAME:
2660603
SHEET 2